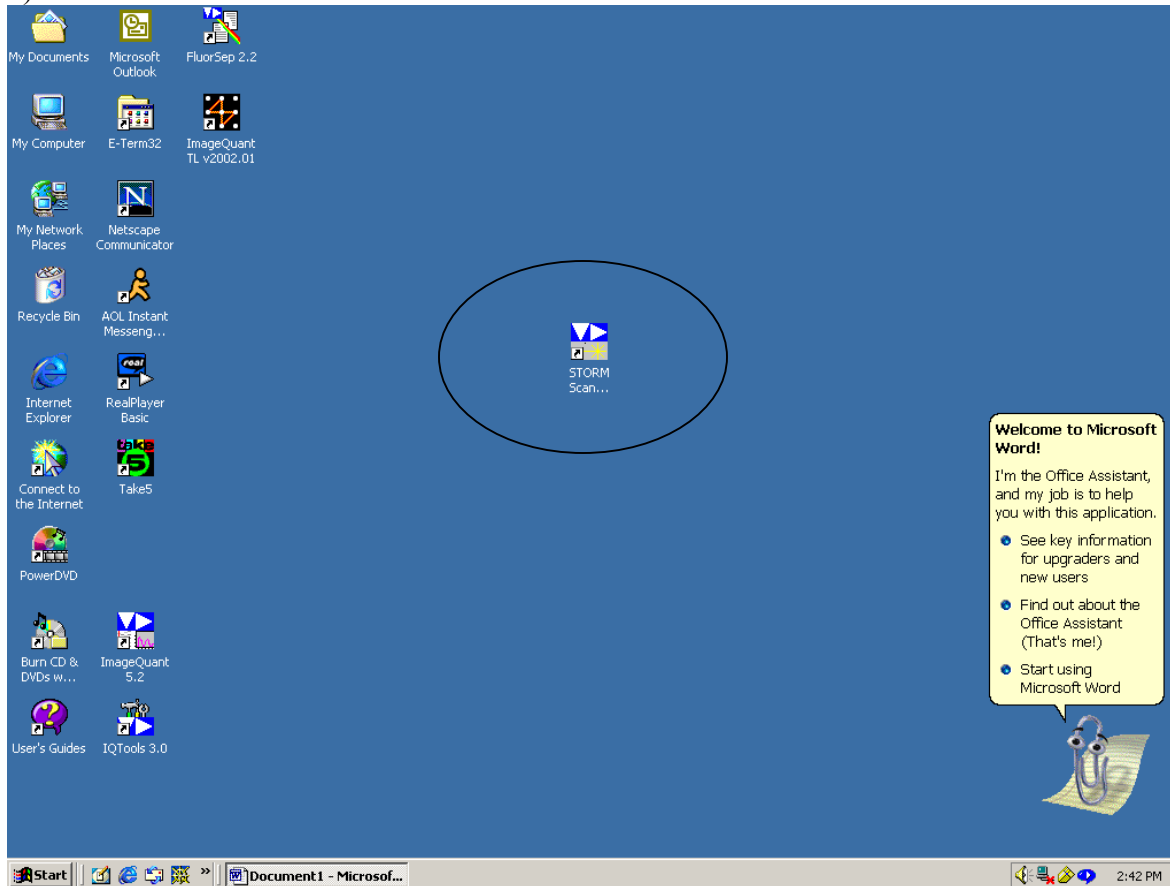


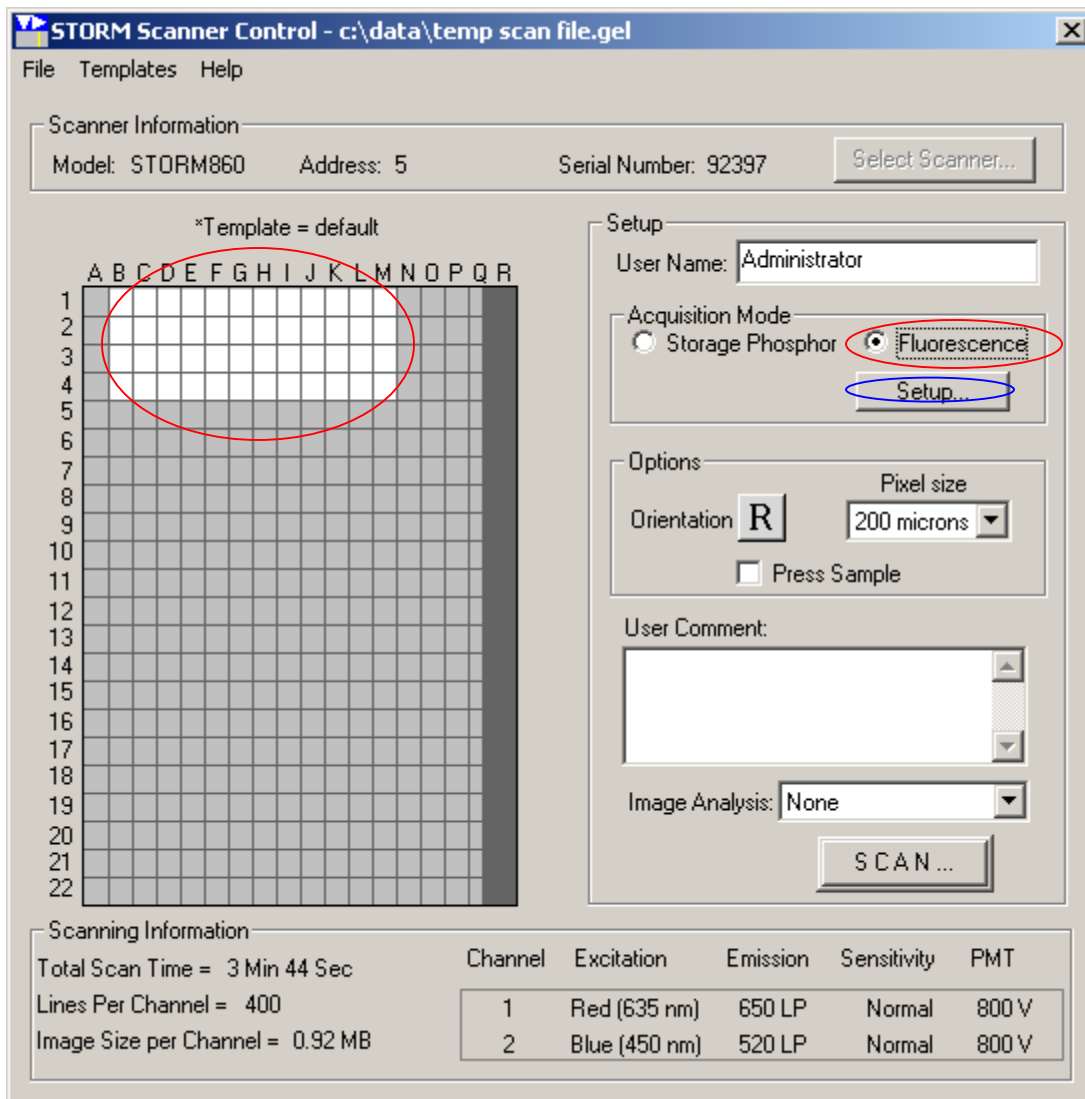
Storm Imaging Protocol for Western blots

- 1) After final wash in TBS, incubate in ECL+ (3mL dH₂O, 3mL Reagent A, 75microliters Reagent B) for 1 to 5 minutes.
- 2) Without drying, place membrane in plastic sheet cover.
- 3) Place plastic cover in the STORM scanner, protein side down. Make note of the coordinates on the scanner.

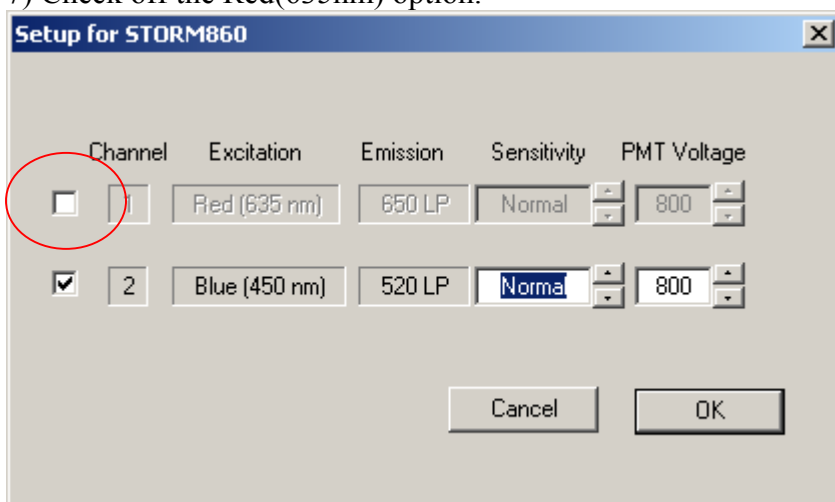
4) Choose STORM Icon



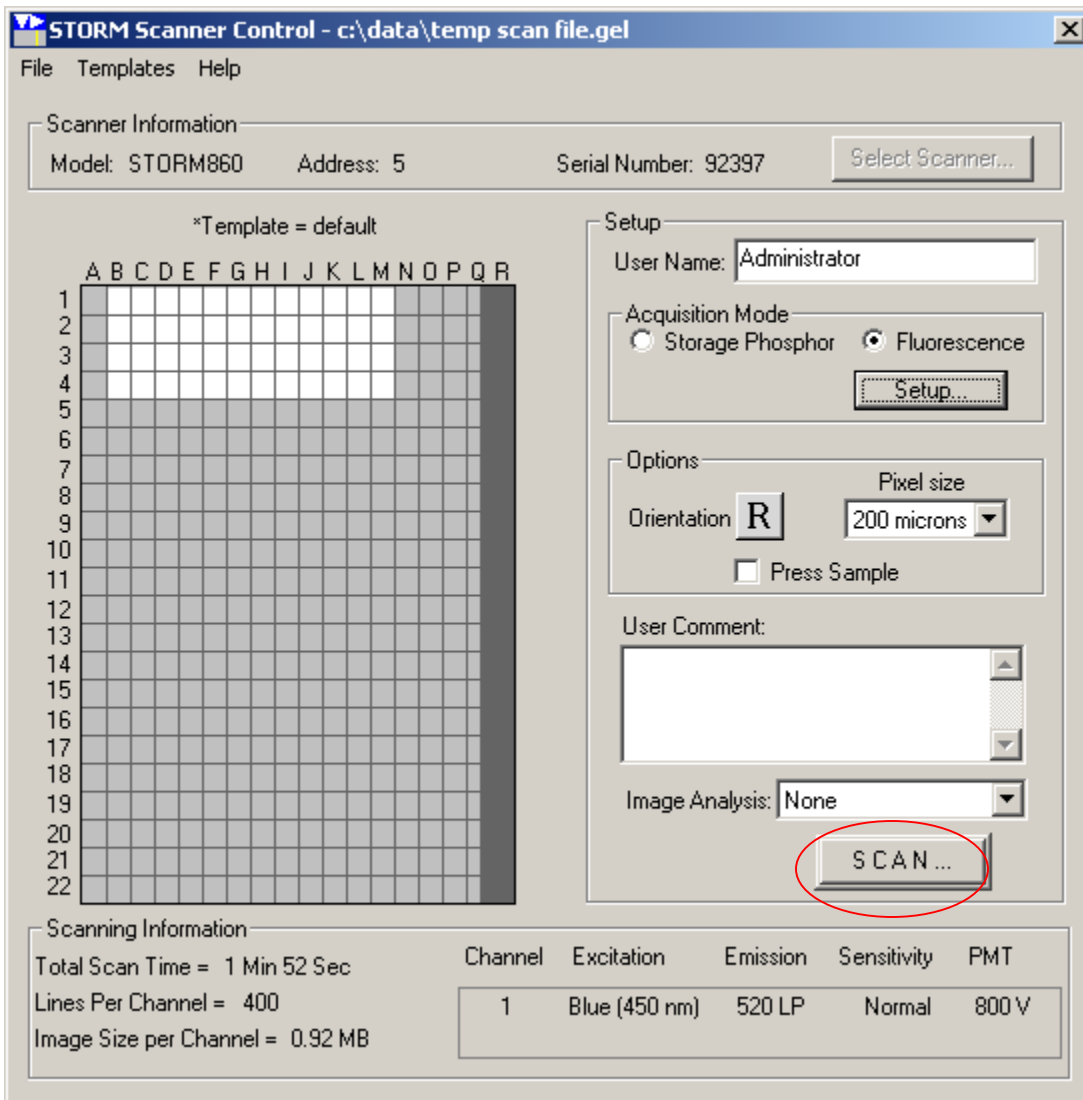
- 5) Highlight coordinates that match the area covered by the membranes.
- 6) Choose the fluorescence acquisition mode (not storage phosphor). Then select the 'Setup...' option.



7) Check off the Red(635nm) option.



8) Hit the 'Scan' button at the bottom right corner of the screen.



9) Lastly, select the folder you want the image saved to and wait for the scan to finish (usually 1 to 2 minutes). If any reagent has leaked from the cover sheet, clean with 70% EtOH followed by water. Dry with Kimwipe.

-Protocol prepared by Pete Oppelt, Fisher Lab (x1712)